



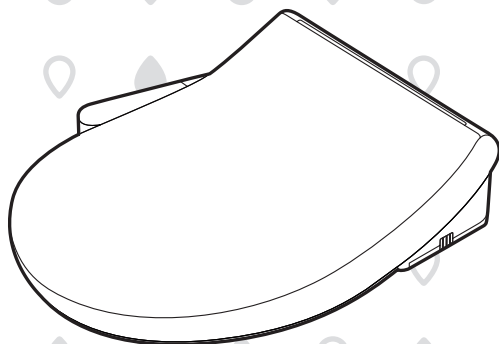
COWAY LOVES THE PLANET
This paper can be recycled.

MY

Coway

Coway Battery-Powered Bidet BA35-A

• For your safety and proper use of the product, please read this user manual before use.



FEATURES

1

Battery-powered bidet

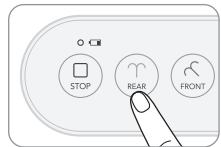
- Features an onboard power source and can be installed in just about any bathroom environment.



2

Simple Use with One Button (Convenience)

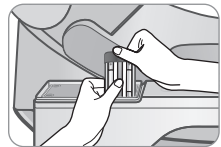
- Operated by battery power, simply press the button for the nozzle to extend outwards similar to an electronic bidet, which allows for thorough cleansing for both men and women.



3

Easy Battery Replacement

- With Coway's easy rotating structure applied to the back of the bidet's control panel, anyone can easily replace the batteries. (Requires 3 AA batteries)



4

Strong and Gentle Hybrid Water Flow

- Provides both a strong, wide water flow and smooth water flow from a very fine hole. Also, Coway's unique oval-shaped wide water flow cares for a wider area.



5

Nozzle Movement and Self-Cleansing

- Allows movement of the three-stage nozzle at the desired position.
- Keeps the product hygienic through automatic nozzle self-cleansing function before and after each use.



6

Slim and All-in-One Design

- The seamless design makes it easy for the water to drip when water drips onto the bidet cover with the integrated design that matches any ceramic ware or bathroom to create a neat atmosphere.



DEAR CUSTOMERS

Thank you for using our **Coway Battery-Powered Bidet.**

Please read this user manual to use and maintain the product correctly.

If you encounter a problem while using the product, Please refer to the user manual to solve the problem.

CONTENTS

Product Information

- | 03 | **Safety information**
 - Installation
 - During Use
 - Others
- | 07 | **Part names**

How to use

- | 09 | **Buttons and display panel**
- | 11 | **Using your bidet**
- | 12 | **Choosing the desired cleansing**
 - For rear cleansing
 - For front cleansing

Maintenance

- | 14 | **Installation**
 - Before the Installation
 - Remove existing toilet seat
 - Install product
- | 17 | **Cleaning**
 - Cleaning the product body
 - Cleaning the nozzle
 - Cleaning the mesh filter
- | 18 | **Maintenance**
 - Removing the product
 - Replacing the mesh filter
 - Replacing the batteries

Others

- | 21 | **Troubleshooting**
- | 23 | **Specifications**

- Please keep the user manual where it can be readily reached or found. -

SAFETY INFORMATION

Make sure to follow these instructions for your safety!

These instructions are intended to keep the users safe and prevent property damage. Please use the product correctly after reading the precautions carefully.

- ⚠ DANGER :** Death or serious injury may occur if the instruction is not followed.
- ⚠ WARNING :** Severe bodily injury or property damage may occur if the instruction is not followed.
- ⚠ CAUTION :** Minor bodily injury or property damage may occur if the instruction is not followed.

Installation

- ⚠ Do not install the product near an electric heating device.**
There is a risk of fire.
- ⚠ Do not use or store flammable gases or materials near the product.**
There is a risk of fire.
- ⚠ Do not install the product in a location that is too humid, dusty or exposed to water (rain) splashes.**
There is a risk of fire.
- ⚠ Use the tap water for water supply.**
Using the industrial water or treated water for water supply may cause skin damage or skin disease.
- ⚠ Do not use the product under direct sunlight.**
It can cause discoloration or bleaching.
- ⚠ Make sure to inspect the water source connection part after installation for any leakage.**
Make sure to fix rubber packing on the T connection pipe.



Tips

This product is only intended for use in the bathroom and should be used in accordance with the user manual. Do not use for any other purposes.

During Use

- ⚠ **Do not bring the product close to an electric heater or throw fire objects such as a burning cigarette into the toilet.**
There is a risk of product deformation or fire.
- ⚠ **Do not use the product in a highly humid place or sprinkle water on the product.**
- ⚠ **Do not push a metal wire or sharp object into a gap on the product.**
It may damage or break the product.
- ⚠ **Do not place a bowl filled with water, chemicals, food, small metal pieces, or flammable substances on top of the product.**
If foreign substances enter the product, there is a risk of electrocution or fire.
- ⚠ **Do not use the product if it is not working properly.**
 - * Close the valve of the main water supply and contact the service center.There is a risk of electrocution or fire.
- ⚠ **Before cleaning the mesh filter, close the main water supply valve.**
It may damage or break the product.
- ⚠ **Do not sit or stand on the seat cover or put heavy objects on it.**
It may damage or break the product.
- ⚠ **Do not use the control panel as a support or press it with excessive force.**
Doing so can damage or break the product.

SAFETY INFORMATION

⚠ DANGER : Death or serious injury may occur if the instruction is not followed.

⚠ WARNING : Severe bodily injury or property damage may occur if the instruction is not followed.

⚠ CAUTION : Minor bodily injury or property damage may occur if the instruction is not followed.

⚠ Do not open or close the seat cover with excessive force or lean on it.

It may damage or break the product.

⚠ Be careful not to smear the nozzle or product surface with urine.

It may cause odors or product breakdown.

⚠ Close the main water supply valve if it is not being used for a long period of time.

⚠ Make sure to use the new hose set provided with the product. Do not use an old hose set.

⚠ Persons (including children) with reduced physical, sensory or mental capabilities should be supervised or instructed to use the product.

There is a risk of bodily injury or product breakdown.

⚠ Children should be supervised to ensure that they do not play with the appliance.

There is a risk of bodily injury or product breakdown.

Others

- ⚠ **Taking a shower or cleaning the bathroom with water, make sure that the bidet's main body or control panel does not come in contact with water, detergent, etc.**

It may damage or break the product.

- * If foreign materials enter the product, close the main water valve, and call the Coway service center.

- ⚠ **Do not disassemble, repair, or modify the product on your own.**

It may damage or break the product.

- ⚠ **Do not separate the main body and seat.**

It may damage or break the product.

- ⚠ **Do not sprinkle water on the product or use thinner, benzene, chemicals, hydrochloric acid detergents, etc.**

This may result in corrosion, discoloration or scratches.

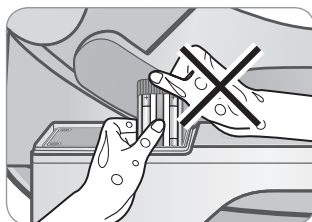
- * Wipe it up with soft cloth or sponge to clean the product.

- ⚠ **Do not pull the bidet hose or the connection hose with excessive force.**

It may cause leakage or product breakdown.

- ⚠ **Do not replace the battery with wet hands. Dry hands well before replacing the battery.**

It may damage or break the product.



Tips

- Use 3 AA-type batteries.
- Do not use new and old batteries together.
- Check +, - poles when replacing batteries.

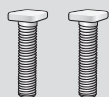
PART NAMES

Front/Rear view



Installation kit

Anchor screws X 2



Anchor rubbers X 2



Anchor washers X 2



Anchor nuts X 2



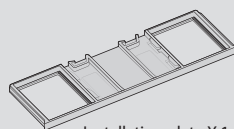
T-shaped connector X 1



Rubber packing X 1



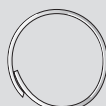
Cover screw X 1



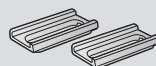
Installation plate X 1



Batteries (AA) X 3



Bidet hose X 1



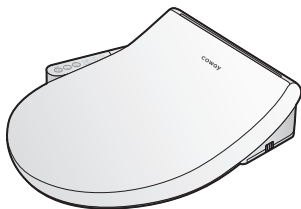
Fixing sliders X 2

* The actual installation parts may not look exactly as shown.

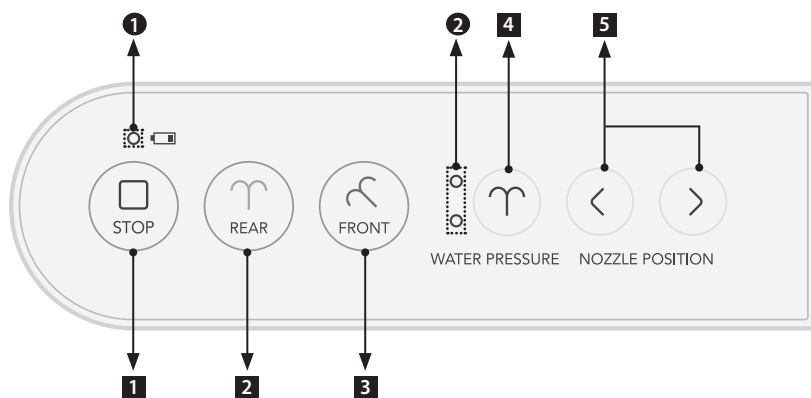
BUTTONS AND DISPLAY PANEL

Display panel/Control panel

● Display panel ■ Control panel



BA35-A



1 Stop button

2 Rear button

3 Front button

4 Water pressure button

5 Nozzle position button

1 Low battery indicator

2 Water pressure indicator

Display panel



1 Low battery indicator

When the battery needs to be replaced, the LED flashes.



2 Water pressure indicator

Press the water pressure button to adjust the pressure between level 1 and 2.

WATER PRESSURE

Control Panel



1 Stop button

All operating functions will stop.



2 Rear button

Use this button to use the rear cleansing function.



3 Front button

Use this button to use the front cleansing function.



4 Water pressure button

Press the water pressure button to adjust the pressure between level 1 and 2.

WATER PRESSURE



5 Nozzle position button

Used to adjust the vertical position of the nozzle during the front or rear cleansing operation. Press the nozzle position button to select from the three nozzle position settings.

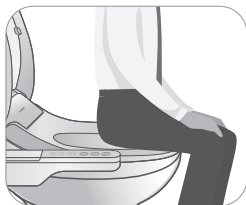
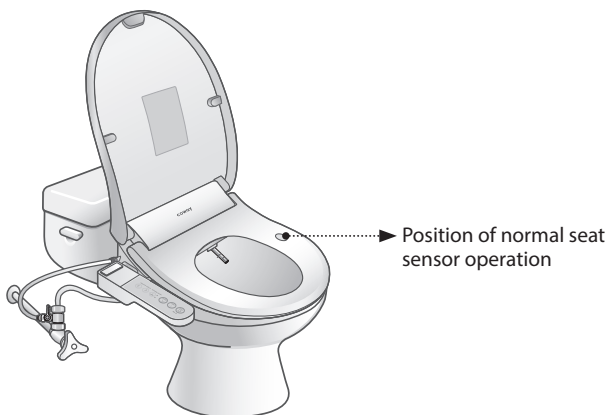
* The default position is level 2.

NOZZLE POSITION

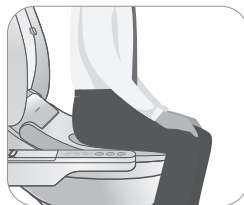
USING YOUR BIDET

Seat on the seat

- Functions become available when the seat sensor is activated.
- You must sit on the seat for at least 3 seconds in order to activate the bidet.
- The sensor in the seat may not work properly depending on the way in which the user sits on the seat.
 - * If the bidet does not work, please move slightly towards the rear on the seat.
- When you move away from the bidet, all functions are automatically stopped.
- The product may not work if a little child is seated, so please sit behind the seat sensor sticker.



Wrong position



Right position

- If you sit in the wrong position, there will be no clicking sound.
- Please sit behind the seat sensor sticker.

- If you sit in the right position, there will be a clicking sound.

CHOOSING THE DESIRED CLEANSING

For rear cleansing

■ Cleansing

When seated, press the 'Rear' button.

- Cleansing water will spray for approximately 1 minute and then automatically stopped.
- Self-cleaning is performed for approximately 6 seconds after the nozzle retracts itself.
- * If the 'Rear' button is pressed again during the cleansing operation, additional rear cleansing is performed for another minute.
- * While cleansing, users can adjust water pressure according to their preference.
- * The bidet will not function without a person seated on the seat.
- * For normal operation of the product, water pressure for ejection must be 0.1 MPa (approximately 14.2 psi), above the minimum water flow standard (1 L/min).
- * The nozzle may not extend when the toilet is flushed using the lever.



■ Stop

To stop the current operation, press the 'Stop' button.

- This stops all currently operating functions.



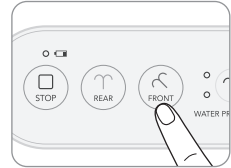
CHOOSING THE DESIRED CLEANSING

For front cleansing

■ Cleansing

When seated, press the 'Front' button.

- Cleansing water will spray for approximately 1 minute and then automatically stopped.
- Self-cleaning is performed for approximately 6 seconds after the nozzle retracts itself.

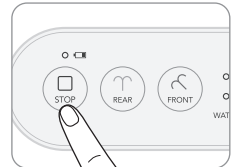


- * If the 'Front' button is pressed again during the cleansing operation, additional front cleansing is performed for another minute.
- * While cleansing, users can adjust water pressure according to their preference.
- * The bidet will not function without a person seated on the seat.
- * For normal operation of the product, water pressure for ejection must be 0.1 MPa (approximately 14.2 psi), above the minimum water flow standard (1 L/min).
- * The nozzle may not extend when the toilet is flushed using the lever.

■ Stop

To stop the current operation, press the 'Stop' button.

- This stops all currently operating functions.



Tips



If the water pressure is too strong when you use the front or rear cleansing feature, press the water pressure button to set the lowest level (level 1).

INSTALLATION

■ Install product

Tighten the anchor nuts so the bidet is attached firmly onto the toilet.

■ Installation location

The bidet is for use in the bathroom so make sure to install it in a place where water cannot splash it directly.

■ After installation

Store the existing product away from direct sunlight.

■ Cold water pipe

Make sure to connect the bidet to a cold water pipe.



Tips

Consult with a Coway technician for the detailed installation method to ensure optimal performance of the product.

Before the Installation

Check the surface of toilet bowl to ensure the fixing bracket is placed flatly.
If toilet bowl has uneven surface, the seat sensor will not work properly.

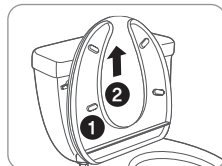


INSTALLATION

Remove existing toilet seat

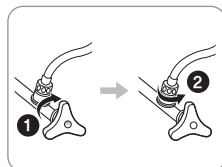
Remove the anchor nuts to detach the existing toilet seat ① and the cover ②.

* Store the removed seat and seat cover safely in a place with no direct sunlight.



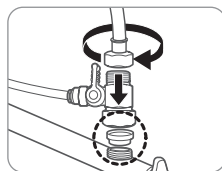
Install product

1. Close the main water supply valve ① then remove the existing water tank hose ②.

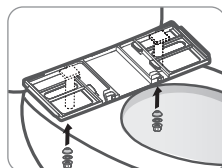


2. Connect the rubber packing, the T-shaped connector and the water tank hose in order to the existing water pipes. Connect the bidet hose to the T-shaped connector.

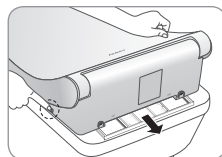
- * Rubber packing must be inserted into every T-shaped connector.
- * Fully tighten the nuts at the top and bottom of the T-shaped connector in a clockwise direction.



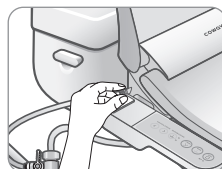
3. Insert the anchor screws into the installation plate on top of the toilet and tighten the nuts so it cannot move.



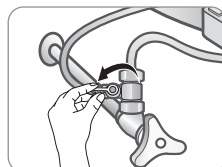
4. Place the bidet on the fixing bracket.



5. Connect the bidet hose (tubing) to the T-shaped connector and the product's inlet port.

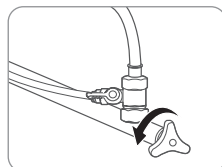


6. Turn the lever on the T-shaped connector to open it.

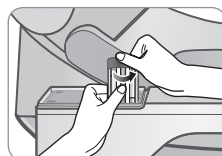


7. Open the main water supply valve.

- Make sure to check in the T valve connection and the bidet's inlet port for any leakage after opening the water supply valve.



8. Insert 3 new AA batteries into the battery cartridge.
(see page 19)



9. Check if the main unit is ready to operate normally.

- If the Red LED indicator on the control panel blinks, contact your COWAY service center.



CLEANING

Cleaning the product body

Use a soft cloth or sponge with a neutral detergent to clean the bidet.

- Failure to do so may result in product deformation or damage.

⚠ The product body and the controller should never be cleaned with water.



Tips

⚠ Do not use a neutral detergent or kitchen detergent that contains thinner, benzene, hydrochloric acid detergent, or abrasives.

⚠ Make sure to follow the above instructions as, unlike other surfaces, the seat is highly susceptible to scratches and rough scrubbers can scratch or peel the surface.

Cleaning the nozzle

- Gently lift and pull out the nozzle using your hand until you have clear view of it.

- Clean the nozzle using a neutral detergent with a soft sponge or brush.



Tips

⚠ Gently hold onto the nozzle as you clean it. Applying excessive force to the nozzle may damage the nozzle and cause it to malfunction.

Cleaning the mesh filter

When the water pressure gets low, it is time to clean the water supply mesh filter.



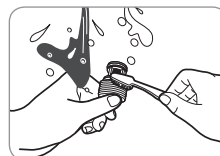
Tips

⚠ Do not remove the mesh filter with the main valve in the open position.

Thoroughly rinse the mesh filter under running water.

- For better results, remove any buildup of foreign substances from the filter using a brush.

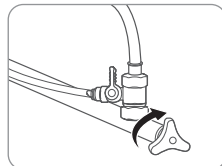
- Using excessive force to clean the filter may damage it.



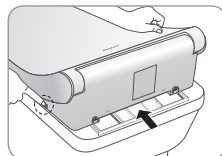
MAINTENANCE

Removing the product

1. Close the main water supply valve.



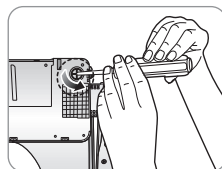
2. Pull the product forwards by holding both sides of the product while pressing the button at the bottom right of the product, to separate the product from the installation plate.



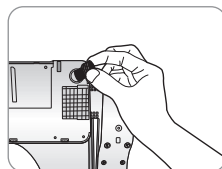
Replacing the mesh filter

When the water pressure gets low or the product has been used for a long time, replace the old mesh filter into a new one.

1. Remove the used mesh filter on the bottom of the product using a (-) screwdriver.

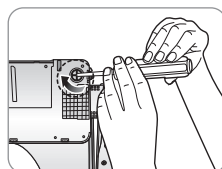


2. Replacing the new mesh filter.



3. Reattach the new mesh filter to the product.

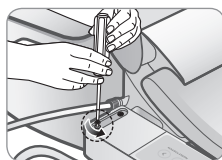
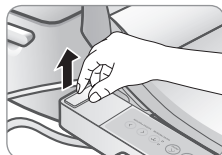
- When reattaching the mesh filter, make sure that the rubber packing (2 EA) does not come out.



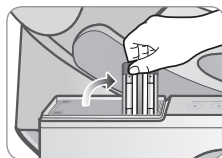
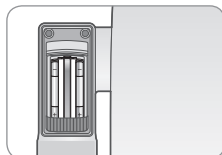
MAINTENANCE

Replacing the batteries

1. After removing the cover, remove 2 screws to open the battery lid.

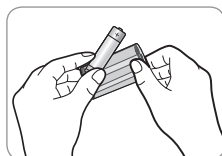
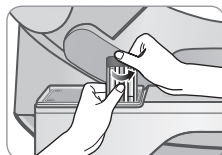


2. Rotate the battery cartridge assembly 90 degrees.

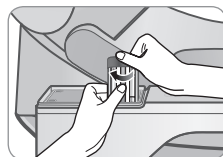


3. Remove 3 AA batteries in the battery cartridge and insert 3 new AA batteries.

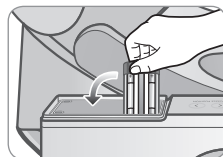
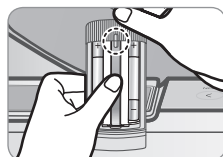
- Check +, - poles when replacing the batteries.



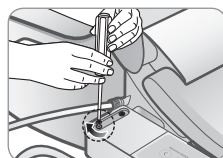
4. Rotate the battery cartridge cap on the control panel to close it. After rotating the cartridge cap, assemble it by rotating to the fully tightened position.



* After replacing the battery, make sure the main body and the cartridge cap are fully engaged.



5. Close the cover of the control panel battery and fasten the 2 screws to close the lid.



Tips

Always adhere to the following precautions to prevent ruptured batteries and battery acid leakage.

- ⚠ Always use new versions of the same type battery type each time you replace batteries.
- ⚠ Remove the battery from the battery compartment when not using the product for extended periods of time.
- ⚠ Do not use rechargeable batteries.
- ⚠ Do not expose to fire.
- ⚠ Do not replace them with wet hands when replacing the batteries.
- ⚠ Life period of the bidet may vary depending on the battery's manufacturer, type, and capacity.
- ⚠ Replace the batteries if the battery discharge indicator lamp blinks.

TROUBLESHOOTING

The bidet may operate abnormally due to minor causes not because of a product malfunction but because the user is unfamiliar with using the product. In such a case, problems can be easily solved even without the help of the Service Center by checking the following. If you cannot solve the problem after checking the following items, please call the Service Center.

| Symptom | Check | Solution |
|--|--|---|
| The product is not functioning at all. | • Is the low battery LED flashing? | Replace the new battery. |
| | • Is the battery inserted normally? | Please check the insertion positions (+,-). |
| | • Is the seat sensor working properly? | Refer to seat sensor instructions. (see page 11) |
| There is no water coming out of the nozzle. | • Is the main water supply valve closed? | Open the main water supply valve. |
| | • Is the nozzle clogged? | Unclog the nozzle using a brush. |
| | • The bidet has been installed, but there's no water coming out of the nozzle. | Check if your water has been shut off. Check if the handle valve is in the locked position. |
| The water pressure is too low. | • Is the water pressure setting too low? | Adjust the water pressure setting. |
| | • Is the nozzle clogged? | Unclog the nozzle using a brush. |
| | • Is the water supply mesh filter dirty? | Clean the mesh filter. (see page 17) |
| Water continues to come out after stop is pressed. | • Water is leaking from the bidet hose. | Push the bidet hose all the way in. |
| Water is leaking, but not from the nozzle. | • Water is used to clean the nozzle after cleansing. This is not a malfunction. | |
| | • Water beads can sometimes form around the nozzle. Water beads formed at the bottom of the product after cleaning the nozzle may drip into the bowl. This is not a malfunction. | |
| The buttons are not responding. | • Are you seated on the bidet? | The bidet's features are only active when there is a person seated on the bidet. |
| | • Is the handle valve located on the side of the bidet in the released position? | If the handle valve is in the locked position, the nozzle will not extend. |

| Symptom | Check | Solution |
|--|--|--|
| The control panel does not work. | • Do the batteries need replacing? | Replace the batteries. |
| | • Are the batteries inserted the in the correct position(+/-)? | Reinsert the batteries in the correct positions. |
| | • Is the toilet seat sensor working properly? | Refer to the seat sensor instructions. |
| Even though the seat is not occupied, the cleansing operate when you press the button. | • Something get jammed in hinge of seat. | Remove the jammed objects. |

SPECIFICATIONS

| Product name | Coway Battery-Powered Bidet |
|------------------------|--|
| Model | BA35-A |
| Feed water pressure | 0.1 MPa - 0.49 MPa (14.2 psi - 71 psi), Feed water pressure(more than 1 L/min) |
| Dimensions | 449.5 mm (Width) X 505.5 mm (Depth) X 130.5 mm (Height) |
| Weight | 3.45 kg |
| Rear cleansing | Minimum 800 mL/min, automatic nozzle self-cleaning function |
| Front cleansing | minimum 800 mL/min, automatic nozzle self-cleaning function |
| Standard time | Rear cleansing 1 minute, front cleansing 1 minute |
| Water pressure control | 2 level |
| Nozzle position | 3 level |
| Installation parts | 2 anchor screws, 2 anchor rubbers, 2 anchor washers, 2 anchor nuts 1 bidet hose, 1 cover screw, 1 Installation plate, 2 fixing sliders, 1 Rubber packing, 1 T-shaped connector, 3 batteries (AA) |
| Operating temperature | 0 ℃ ~ 40 ℃ |

► The specifications are subject to change for the purpose of improving product performance.

| MALAYSIA |
|---|
| Add: Coway (Malaysia) Sdn. Bhd. Level 20, Ilham Tower, No. 8, Jalan Binjai, 50450 Kuala Lumpur. Call center : 1-800-888-111 |

MEMO

////////////////////////////////////

MEMO

////////////////////////////////////

MEMO

////////////////////////////////////

coway

www.coway.com